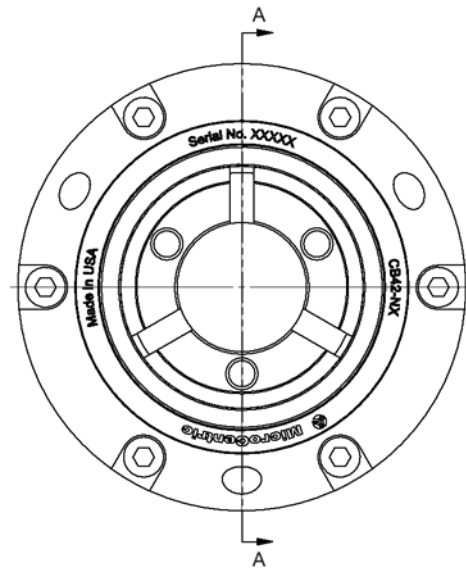
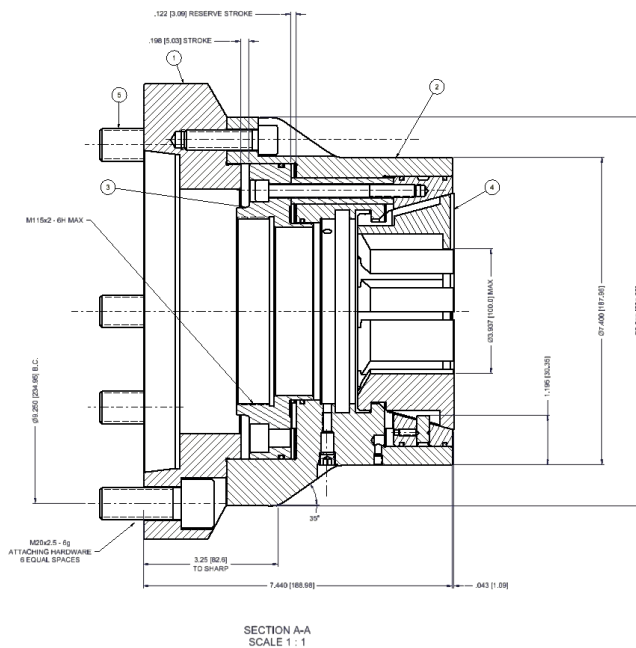


Specifications

Chuck Model	Spindle Nose Model	Collet Model	Accuracy Max Radial Runout	Collet Capacity	Collet Clamp Range	Chuck Stroke Linear	Max Draw Tube Force	Max Clamping Force	Max Speed	Chuck Weight
CB100-NX/A11	A2-11	100BZI	.0008"	3.937"	+/- .040"	.315"	14,612 lbs	33,721 lbs	5,000 rpm	85.1 lbs
			0.020mm	100mm	1mm	8mm	65 kN	150 kN		38.7 kg

Dimensions



ITEM	QTY	PART NUMBER	DESCRIPTION
1	1	16 100 157	ADAPTER
2	1	16 100 219	FITTED BODY AND SLEEVE
3	1	SEE NOTE	DRAW TUBE CONNECTOR
4	1	20 810 0000	COLLET
3	6	83 197 M050	M20 x 50 SHCS

NOTES

- THE CHUCK IS SHOWN IN THE NOMINAL CLAMPED POSITION.
- THREAD PER CUSTOMER REQUIREMENTS.